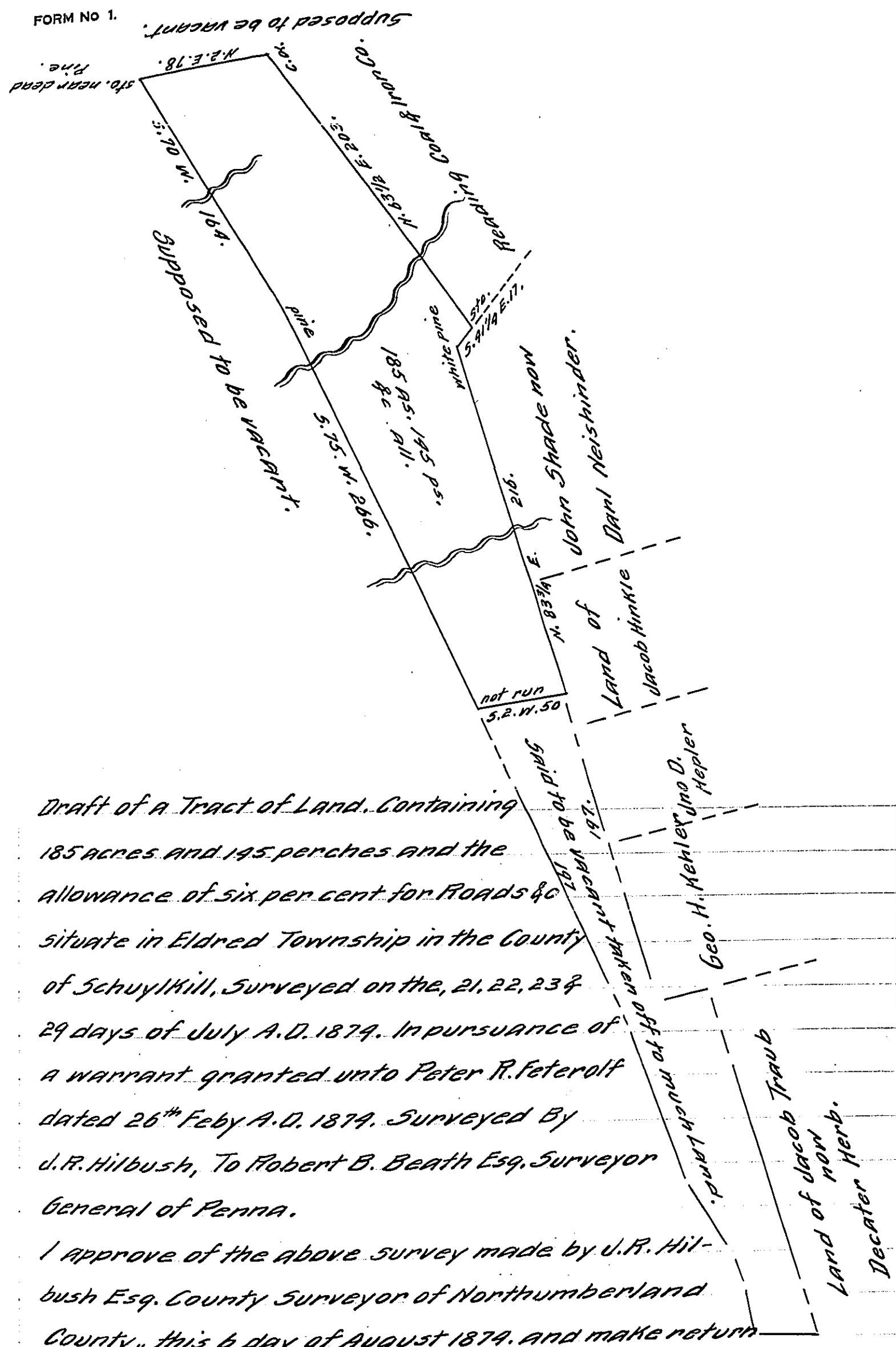


FORM NO 1.



Draft of a Tract of Land. Containing 185 acres and 145 perches and the allowance of six per cent for Roads &c situate in Eldred Township in the County of Schuylkill, Surveyed on the, 21, 22, 23 & 29 days of July A.D. 1879. In pursuance of a warrant granted unto Peter R. Feterolf dated 26th Feby A.D. 1879. Surveyed By J. R. Hilbush, To Robert B. Beath Esq. Surveyor General of Penna.

I approve of the above survey made by J. R. Hilbush Esq. County Surveyor of Northumberland County. this 6 day of August 1879. and make return thereof.

*Daniel L. Boyer.
County Surveyor.*

IN TESTIMONY that the above is a copy of the original remaining on file in the Department of Internal Affairs of Pennsylvania, made conformably to an Act of Assembly approved the 16th day of February, 1833, I have hereunto set my Hand and caused the Seal of said Department to be affixed at Harrisburg, this twentieth day of January 1911

*Henry Houder
Secretary of Internal Affairs.*